



ACCESSORIES EV0700 EV0900

ZANUSSI
PROFESSIONAL

INDEX

ACCESSORIES FOR SPECIFIC FUNCTIONS 4

Accessories for gas ranges.....	4
Accessories for gas boiling top.....	6
Accessories for electric ranges.....	6
Accessories for induction ranges.....	7
Accessories for oven ranges.....	8
Accessories for fry tops.....	9
Accessories for grills.....	11
Accessories for multifunctional cookers.....	14
Accessories for fryers.....	15
Accessories for pasta cookers.....	20
Accessories for bain maries.....	26
Accessories for braising pans.....	26
Accessories for boiling pans.....	27
Accessories for cupboards and open bases.....	29
Accessories for refrigerated bases.....	31
Soft cooker.....	31

ACCESSORIES FOR INSTALLATION..... 32

Covering panels.....	32
Handrails.....	33
Chimney upstands.....	34
Stands / supports.....	35
Junction sealing kit.....	35
Stainless steel plinths.....	36
Cover panels for service duct.....	37
Installation on 100 mm concrete plinth.....	38
Support for bridge installation.....	39
Cantilever support.....	40
Wheels and flanged feet.....	43
Water columns.....	44

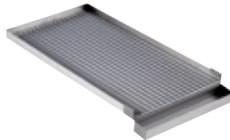
ACCESSORIES FOR GAS RANGES



921684



921685



BURNER DOUBLE ZONE PLATES

RANGE	EVO700	
PNC	921684	921685
Plate	smooth	ribbed
Material	stainless steel	

- Fry top mode for 700 range gas burners and simple service
- Equipped with a removable grease collection container

206264



206170



BURNER RADIANT PLATES

RANGE	EVO700	EVO900
PNC	206264	206170
Plate		only for 6kW burners
Material	cast iron	

- Solid top mode for gas burners and simple service



PAIR OF CAST IRON GRIDS

RANGE	EVO900	
PNC	206208	
Material	cast iron	

ACCESSORIES FOR GAS RANGES



206363

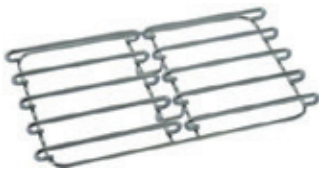


WOK SUPPORT

RANGE	EVO700 and EVO900
PNC	206363
Material	stainless steel

- Wok pan support for open burners
- Except for 3-burner top 392024

206297
206298



TWIN-BURNER STAINLESS STEEL GRIDS

RANGE	EVO700	EVO900
PNC	206297	206298
Material	stainless steel	

- Pans support for gas burners

ACCESSORIES FOR GAS BOILING TOP



206283



GROUND SUPPORT FOR 3-BURNER GAS BOILING TOP (392024)

RANGE	EVO900
PNC	206283
Material	stainless steel

- Lets the 3-burner top 392024 be used like a stockpot

ACCESSORIES FOR ELECTRIC RANGES



206168
206056



CAST IRON BARS

RANGE	EVO700	EVO900
PNC	206168	206056
Material	cast iron	

- 2 cast iron bars to obtain 2 wider flat cooking zones
- EVO700 for hot square plates only

ACCESSORIES FOR INDUCTION RANGES



653596



INDUCTION PANS

653597



653598



RANGE		EVO700 and EVO900		
PNC	653596	653597	653598	
Material	stainless steel	aluminum	aluminum	
Handle	stainless steel	stainless steel	stainless steel	
Diameter	200 mm	240 mm	280 mm	

910613



INDUCTION WOK-PANS

911587



911588



RANGE		EVO700 and EVO900		
PNC	910613	911587	911588	
Material	steel	stainless steel	stainless steel	
Handle	wood	stainless steel	-	
Diameter	360 mm	360 mm	360 mm	
Height	105 mm	105 mm	-	

ACCESSORIES FOR OVEN RANGES



164250



CHROME GRID

RANGE		EVO700 and EVO900
PNC		164250
Oven		for static oven
Size		2/1 GN
Material		chrome

- 1 piece is included in standard delivery

206204



206243



CHROME GRIDS

RANGE		EVO900	
PNC	206204		206243
Oven	for large oven*		for ventilated oven**
Size	972x687 mm		2/1 GN
Material	chrome		

- * For codes 392015 and 392016; 1 piece is included in standard delivery
- ** 2 pieces are included in standard delivery

ACCESSORIES FOR FRY TOPS



164255



206420

SCRAPERS

RANGE EVO700 and EVO900

PNC	164255	206420
Use on	smooth plate	ribbed plate

- 1 or 2 pieces, according to the surface type, is included in the standard delivery for the EVO700 and EVO900 chrome plated models and are optional for steel EVO700 models

206346

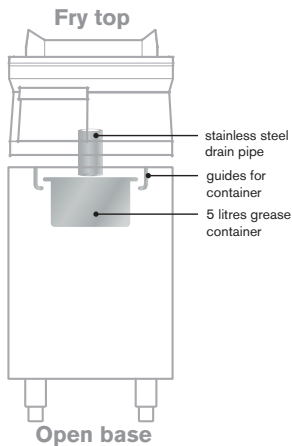


GREASE CONTAINER

RANGE EVO700 and EVO900

PNC	206346
-----	--------

- Includes containers, guides, stainless steel drain pipe to convey the grease/oil from the fry top cooking surface to the container and front closing panel
- To be used with top, cupboard and open base



ACCESSORIES FOR FRY TOPS



206296



STOPPER

RANGE	EVO700 and EVO900		
PNC	206296		
Material	stainless steel		

- Stopper for fry top with horizontal plate - used to keep the grease released by the food on the frying plate

206153



216153



206345



WATER DRAINS

RANGE	EVO900		
PNC	206153	216153	206345
Appliance width	400 mm	800 mm	1200 mm

ACCESSORIES FOR GRILLS



206408



GRIDS FOR FREESTANDING GAS GRILLS

RANGE	EVO700		EVO900	
PNC	206414	206410	206408	206404
Appliance width	400 mm	800 mm	400 mm	800 mm
Material	stainless steel			

- Grills are equipped with cast-iron grids with drainage channels as standard

206415



GRIDS WITH DRAIN CHANNELS FOR FREESTANDING GRILLS

RANGE	EVO700		EVO900	
PNC	206415	206411	206409	206405
Appliance width	400 mm	800 mm	400 mm	800 mm
Material	stainless steel			

- Grills are equipped with cast-iron grids with drainage channels as standard

206415



GRIDS WITH DRAIN CHANNELS FOR TOP GRILLS

RANGE	EVO700		
PNC	206415	206416	206418*
Appliance width	400 mm	800 mm	400 mm
Material	stainless steel		
Note	grid	grid	support

206418



- Grills are equipped with cast-iron grids with drainage channels as standard
- *Applied to the splashguard as a support to adjust the inclination of the grid. Order 2 pieces for 800 mm unit
- Except for electric HP grill

ACCESSORIES FOR GRILLS



206422



SCRAPERS

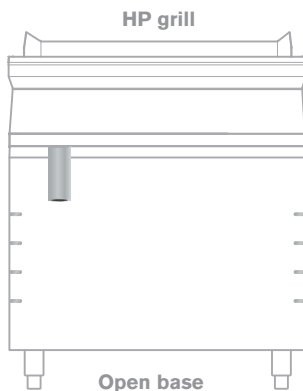
RANGE		EVO700 and EVO900		
PNC	206421	206422	206347	206436
Grid type	stainless steel with drain channels	cast iron	cast iron	steel
Appliance type	standard	standard	HP gas	HP electric
Included		•		•
Note	scraper	scraper	scraper with hook	scraper

206437



DRAIN EXTENSION FOR HP ELECTRIC GRILLS

RANGE		EVO700 and EVO900	
PNC		206437	
Material		stainless steel	
Note		to be used with 206257 (EVO700) or 206145 (EVO900)	



- To be used as an alternative to standard drain together with a GN container to be ordered separately
- Water container capacity should be:
 - 4,5 l for 1/2 module EVO700
 - 8,8 l for 1 module EVO700
 - 12,7 l for 1+1/2 module EVO700
 - 6,7 l for 1/2 module EVO900
 - 13 l for 1 module EVO900
 - 20 l for 1/2 module EVO900

ACCESSORIES FOR GRILLS



206280



WATER FILLING TAPS

RANGE	EVO700 and EVO900	
PNC	206280	206281
Appliance width	400 mm	800 mm

- For gas and electric freestanding grills

206434



HEAT DEFLECTORS

RANGE	EVO700	EVO900
PNC	206434	206435
Appliance typology	Electric HP grill	Electric HP grill

- Delivered as standard with Electric HP grills

921024



COOKING GRIDS

RANGE	EVO700	EVO900
PNC	921025	921024
Appliance typology	Electric HP grill	Electric HP grill

- Delivered as standard with Electric HP grills

ACCESSORIES FOR MULTIFUNCTIONAL COOKERS



921689



LIDS

RANGE		EVO700 and EVO900	
PNC	921689	921690	
Appliance width	400 mm	800 mm	

921690



- For gas and electric multifunctional cookers

164255



SCRAPERS

RANGE		EVO700 and EVO900	
PNC	164255	921694	
Note	scraper	blades with rounded corners	

921694



- Included in standard delivery

ACCESSORIES FOR FRYERS



960638



BASKETS FOR GAS AND ELECTRIC FRYERS

RANGE		EVO700	
PNC	960638	921608	
Quantity	2	1	
Size	half	full	
Appliance typology	2x5 and 7 l	7 l	

921608

- 960638 is included in standard delivery

921629



BASKETS FOR GAS AND ELECTRIC FRYERS

RANGE		EVO700		
PNC	921629	921691	921692	
Quantity	1	1	2	
Size	full	full	half	
Appliance typology	12 l	14 and 15 l	14 and 15 l	

921691

921692

- 921629 is included in standard delivery

921609



BASKETS FOR GAS AND ELECTRIC FRYERS

RANGE		EVO700	
PNC	921609	921642	
Quantity	1	1	
Size	half	full	
Appliance typology	34 l	34 l	

921642

- 921609 is included in standard delivery

ACCESSORIES FOR FRYERS



921691



921692



206196



BASKETS FOR GAS AND ELECTRIC FRYERS

RANGE	EVO700 and EVO900		EVO700
PNC	921691	921692	206196
Quantity	1	2	1
Size	full	half	full
Included	1	1 for programmable	-
Appliance typology	14 and 15 l standard	14 and 15 l standard & programmable	15 l programmable

927223



927226



BASKETS FOR GAS AND ELECTRIC FRYERS

RANGE	EVO900			
PNC	927223	927226	927200	927201
Quantity	2	1	2	1
Size	half	full	half	full
Appliance typology	18 and 23 l	18 and 23 l	18 and 23 l	18 and 23 l
	standard		with a front hook*	

- 927223 is included in standard delivery
- * Can be used to block baskets on the top for oil dripping

ACCESSORIES FOR FRYERS



206235

921023



SEDIMENT TRAYS

RANGE	EVO700 and EVO900	EVO900
PNC	206235	921023
Appliance typology	15 l	23 l

- For freestanding V-shape fryers

921695

927227



UNCLOGGING RODS

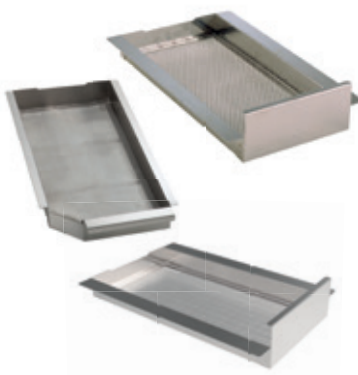
RANGE	EVO700 and EVO900	EVO900
PNC	921695	927227
Appliance typology	15 l	23 l

- For drain pipe of freestanding V-shape fryers

921693

206359

200086



OIL FILTER FOR FREESTANDING FRYERS

RANGE	EVO700 and EVO900	EVO900	
PNC	921693	206359	200086
Appliance typology	7, 2x7, 14, 2x14, 15 and 2x15 l	18, 23* l	23 l**
Material	stainless steel		

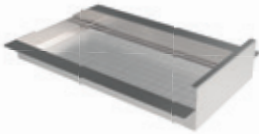
- * Only for Gas Tube model PNC 392084

- **All 23 l fryers except the Gas Tube model

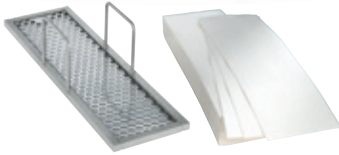
ACCESSORIES FOR FRYERS



200086



200084
200085

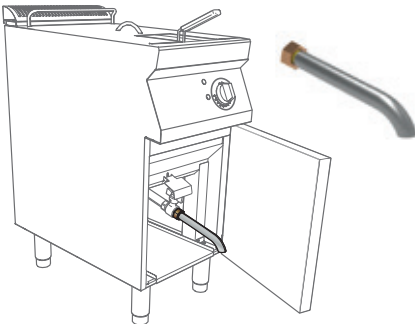


ADVANCED FILTRATION SYSTEM

RANGE		EVO900	
PNC	200086	200084*	200085
Appliance typology	23 l with oil recirculation pump		
Material	stainless steel	stainless steel	paper
Included FOR 23 l	.	-	-

- * Kit for paper filter: mandatory for using paper filter

206209
206301



EXTENSION FOR OIL DRAINAGE

RANGE	EVO700 and EVO900	EVO900
PNC	206301	206209
Appliance typology	15 l	23 l

- Compulsory when the fryer is installed on plinth

200087



EXTENSION WITH PUMP FOR OIL DRAINAGE

RANGE	EVO900
PNC	200087
Material	Highly resistant elastomer with stainless steel extremities
Appliance typology	23 l with oil recirculation pump

ACCESSORIES FOR FRYERS



921696



960645



DEFLECTORS

RANGE	EVO700 and EVO900	EVO900
PNC	921696	960645
Appliance typology	15 l	23 l

- For floured products for freestanding V-shape fryers
- The deflector is lying on the inclined part of the well, in order to avoid the bread or flour released by the products to lie there and get burned.

206201

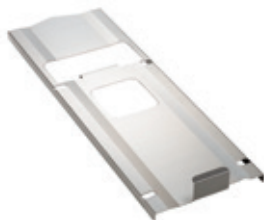


HYGIENIC LID FOR FRYERS

RANGE	EVO900
PNC	206201
Appliance typology	23 l

- Standard lid delivered as standard for the 23 litres fryer model.

200171



LID FOR OIL CONTAINER

RANGE	EVO900
PNC	200171
Appliance typology	23 l

ACCESSORIES FOR PASTA COOKERS



921611



BASKETS

RANGE	EVO700	
PNC	921611	921610
Quantity	1	2
Size	350x220 mm	170x220 mm
Appliance typology	24.5 and 24.5+24.5 l	24.5 and 24.5+24.5 l

921610



- Baskets are not included as standard; only exception is programmable pasta cooker with automatic lifting (code 372100)

921619



BASKETS

RANGE	EVO700
PNC	921619
Quantity	2
Size	105x350 mm
Appliance typology	24.5 and 24.5+24.5 l

- Baskets are not included as standard; only exception is programmable pasta cooker with automatic lifting (code 372100)

206381



BASKET SUPPORT FOR PASTA COOKER

RANGE	EVO700
PNC	206381
Quantity	1
Size	290x85 mm
Appliance typology	24.5 and 24.5+24.5 l

- To be used with 921619

ACCESSORIES FOR PASTA COOKERS



921020



921021



921022



BASKETS AND SUPPORT FOR BASKETS

RANGE	EVO700		
PNC	921020	921021	921022
Quantity	2	2	1
Max nr. of baskets per well	4	6	-
Size	105x160 mm	105x105 mm	230x350 mm
Appliance typology	24.5 and 24.5+24.5 l	24.5 and 24.5+24.5 l	24.5 and 24.5+24.5 l
Note	baskets	baskets	support h 60 mm

- Baskets are not included as standard; only exception is programmable pasta cooker with automatic lifting (code 372100)
- Support is mandatory

ACCESSORIES FOR AUTOMATIC PASTA COOKERS



206312



206314



206362



BASKETS FOR AUTOMATIC PASTA COOKER

RANGE	EVO700		
PNC	206312	206314	206362
Quantity	2	2	1
Size	115x163 mm	105x350 mm	350x230 mm
Appliance typology	automatic pasta cooker		
Note	baskets	baskets	support h 147 mm

- Support is recommended

ACCESSORIES FOR PASTA COOKERS



206433



206237



BASKETS

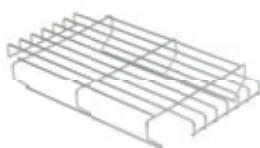
RANGE		EVO900	
PNC	206433	206237	
Quantity	2	1	
Max nr. of baskets per well	6	2	
Size	130x130 mm 6 fit in a 40 l well	135x310 mm 2 fit in a 40 l well	
Appliance typology	40 and 40+40 l	40 and 40+40 l	

- Code 206238 compulsory for: 206433 and 206237

206233



206238



BASKETS AND SUPPORT FOR BASKETS

RANGE		EVO900	
PNC	206233	206238	
Quantity	1+2	1	
Size	1x 1/3 GN + 2x135x310 mm	295x505 mm	
Appliance typology	40 and 40+40 l	40 and 40+40 l	
Note	baskets	support	

- Code 206238 compulsory for: 206233

927216



927211



927210



BASKETS

RANGE		EVO900		
PNC	927216	927211	927210	
Quantity	1	2	3	
Size	1/1 GN	1/2 GN	1/3 GN	
Appliance typology	40 and 40+40 l	40 and 40+40 l	40 and 40+40 l	

ACCESSORIES FOR PASTA COOKERS



927212



ROUND BASKETS

927213



RANGE		EVO900
PNC	927212	927213
Quantity	3	6
Size	Ø 181 mm	Ø 145 mm
Appliance typology	40 and 40+40 l	40 and 40+40 l

927219



SUPPORTS FOR 40 L PASTA COOKERS

960644

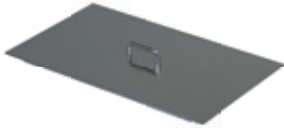


RANGE		EVO900
PNC	927219	960644
Size	290x500x115 mm	330x535x10 mm
Note	grid support for round baskets (compulsory for 927212 and 927213)	support frame to hold 6 round baskets (alternative to 927219)

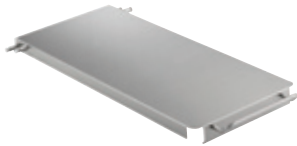
ACCESSORIES FOR PASTA COOKERS



921607



206190



LIDS AND LID HOLDER

RANGE	EVO700	EVO900
PNC	921607	206190
Appliance typology	24.5 l and 24.5 + 24.5 l	40 l and 40 + 40 l
Note	lid	lid and lid holder

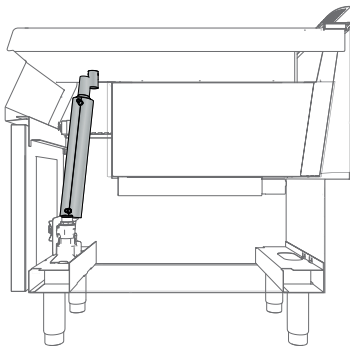
206344



ENERGY SAVING DEVICE

RANGE	EVO700 and EVO900
PNC	206344
Note	1 per well needed

- Used to preheat fresh water to refill the well, thus saving energy



ACCESSORIES FOR PASTA COOKERS

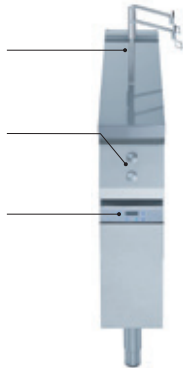


206354

2 Lifting arms

Push-buttons for manual use or cooking cycle start

User interface (9 programs storable)



PROGRAMMABLE BASKET LIFTING UNIT

RANGE	EVO700
PNC	206354
Dimension	200 mm wide

AVAILABLE BASKETS



921610 - 2 baskets 170x220 mm
see page 20



921020 - 2 baskets 156x172 mm
see page 21



206396 - frame/support for
2 single portion baskets for 921020

206355

3 Lifting arms

Push-buttons for manual use or cooking cycle start

User interface (9 programs storable)



PROGRAMMABLE BASKET LIFTING UNIT

RANGE	EVO900
PNC	206355
Dimension	200 mm wide

AVAILABLE BASKETS



927210 - 3 X 1/3GN baskets
see page 22



206433 - 2 basket 130x130 mm
see page 22

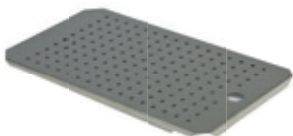


206395 - frame/support for
2 single portion baskets for 206433

ACCESSORIES FOR BAIN MARIES



921622



DRILLED FALSE BOTTOMS

RANGE	EVO700 and EVO900	
PNC	921622	921623
Appliance width	400 mm	800 mm

921627



WATER FILLING TAP

RANGE	EVO700 and EVO900
PNC	921627
Material	stainless steel

ACCESSORIES FOR BRAISING AND BOILING PANS



922403



TROLLEY WITH LIFTING AND REMOVABLE TANK

RANGE	EVO700 and EVO900
PNC	922403
Material	stainless steel

ACCESSORIES FOR BOILING PANS



921626



BASKET

RANGE	EVO700 and EVO900
PNC	921626
Appliance typology	60 l
Note	1-section basket

- To make your boiling pan work as a pasta cooker!

925018



BASKET

RANGE	EVO900
PNC	925018
Appliance typology	100 l
Note	2-section universal basket

- To make your boiling pan work as a pasta cooker!

925019



BASKET

RANGE	EVO900
PNC	925019
Appliance typology	150 l
Note	2-section universal basket

- To make your boiling pan work as a pasta cooker!

ACCESSORIES FOR BOILING PANS



206279



AUTOMATIC DEPRESSURIZATION KIT

RANGE		EVO900	
PNC		206279	
Appliance typology		100 and 150 l	

- For indirect heating boiling pans (double jacketed)
- If not installed: depressurization of the double-jacket must be done manually

927222



WATER ADDITIVE AGAINST CORROSION

RANGE		EVO700 and EVO900	
PNC		927222	
Appliance typology		100 and 150 l indirect heating	

- For indirect heating boiling pans
- 1 container of water additive against corrosion is already included in the standard appliances delivery

927001



MEASURING RODS

RANGE		EVO900		
PNC	927000	927001	927002	
Appliance typology	60 l	100 l	150 l	

ACCESSORIES FOR CUPBOARDS AND OPEN BASES



206342



DOOR FOR OPEN BASE

RANGE EVO700 and EVO900

PNC 206342

- Same for left and right-side door

206259



ELECTRIC HEATING KIT FOR CUPBOARD

RANGE EVO700 and EVO900

PNC 206259

Size 360x510x60 mm

Electric conn. 230V 1ph 50/60 Hz

Power 0.65 kW

- To be fixed on the bottom of the base
- The base has to be with doors and can not be used as holding cabinet for food
- Only in combination with gas cookers and ambient worktops

206245



CENTRAL SUPPORT

RANGE EVO700 and EVO900

PNC 206245

Note central support for installation of drawers and grids (on 800/1200 mm bases) and of doors (on 1200 mm bases)

- Needed for installation of drawers and grid runners (1 piece for 800 mm)
- Needed for installation of drawers and grid runners (2 pieces for 1200 mm) or only doors (1 piece for 1200 mm)
- Recommended if Powergrill is mounted on base

ACCESSORIES FOR CUPBOARDS AND OPEN BASES



206244



SUPPORTS WITH SIDE RUNNERS

RANGE	EVO700		EVO900
PNC	206257	206244	206145
Note	2 supports with side runners for 4 GN 1/1 containers for open base 371112, 371111, 371114, 371263, 371264 and 371265	2 supports with side runners for 4 GN 1/1 containers for cupboards	2 supports with side runners for 4 GN 1/1 containers for open base or cupboards

206360



DRAWERS

RANGE	EVO700	EVO900
PNC	206360	206361
Quantity	2	2
Height	100 mm	100 mm

ACCESSORIES FOR REFRIGERATED BASES



206348



DRAWERS

RANGE		EVO700
PNC		206348
Quantity		2

SOFT COOKER

206428



206429



SOFT COOKER

RANGE		EVO700 and EVO900	
PNC	206428		206429
Size	128x175x340 mm		GN 1/1
Material	stainless steel		
Note	plug-in		with lid

INSTALLATION ACCESSORIES

COVERING PANELS

206319
206335



AESTHETICAL SIDE COVERING PANELS

RANGE	EVO700		EVO900	
PNC	206319		206335	
Appliance typology	freestanding 700 mm high		freestanding 700 mm high	
PNC	206320		206321	
Appliance typology	top 250 mm high		top 250 mm high	

206320
206321



- The code includes 2 side covering panels

206373



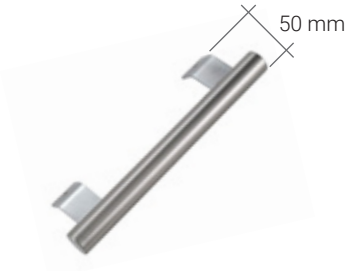
REAR COVERING PANELS

RANGE	EVO700 and EVO900			
PNC	206373	206374	206375	206376
Size	600 mm	800 mm	1000 mm	1200 mm

- For island installation to cover the back of the appliances

INSTALLATION ACCESSORIES HANDRAILS

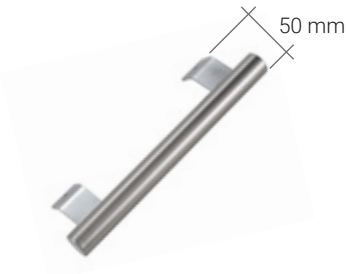
206167



FRONT HANDRAILS 50 MM DEPTH

RANGE		EVO700 and EVO900			
PNC	206166	206167	206191	206192	
Size	400 mm	800 mm	1200 mm	1600 mm	

206165

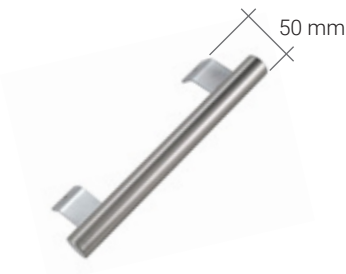


BACK HANDRAILS 50MM DEPTH

RANGE		EVO700 and EVO900	
PNC	206308	206309	
Size	800 mm	1200 mm	

- To be used for island installation

206307



SIDE HANDRAILS 50 MM DEPTH

RANGE		EVO700	EVO900
PNC	206240	216165	
Note	2 pieces: right and left side	2 pieces: right and left side	

206185



PORTIONING SHELVES 140 MM DEPTH

RANGE		EVO700 and EVO900	
PNC	206185	206186	
Size	400 mm	800 mm	

Note: none can be mounted to EVO700 induction and infrared units

INSTALLATION ACCESSORIES

CHIMNEY UPSTANDS



CHIMNEY UPSTANDS

RANGE		EVO700 and EVO900				
PNC	206302	206303	206304	206305	206306	
Width	200 mm	400 mm	800 mm	1000 mm	1200 mm	



CHIMNEY GRID NETS

RANGE		EVO700 and EVO900			
PNC	206399	206400	206402	206403	
Width	200 mm	400 mm	500 mm	590 mm	

INSTALLATION ACCESSORIES

STANDS / SUPPORTS

206183



STAND / SUPPORTS (SHELVES)

RANGE		EVO900
PNC	206183	206184
Width	400 mm	800 mm
Note	to be installed on the neutral work tops	

- Can not be used with Salamanders

INSTALLATION ACCESSORIES

JUNCTION SEALING KIT

206086



JUNCTION SEALING KIT

RANGE		EVO700 and EVO900
PNC	206086	
Note	junction sealing kit to fill any possible gap between side-by-side appliances and prevent from any dirt infiltration	

INSTALLATION ACCESSORIES

STAINLESS STEEL PLINTHS



FRONTAL KICKING STRIPS

RANGE	EVO700 and EVO900					
PNC	206174	206175	206176	206177	206178	206179
Width	200 mm	400 mm	800 mm	1000 mm	1200 mm	1600 mm
Appliance typology	all*	all*	all*	all*	all*	all*

- * Except 23 l fryer

FRONTAL KICKING STRIPS

RANGE	EVO900
PNC	206203
Appliance typology	23 l fryers

SIDE KICKING STRIPS

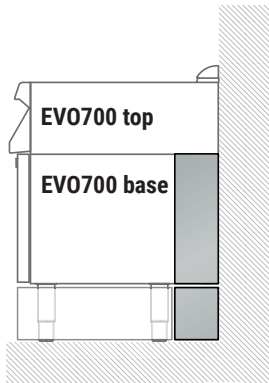
RANGE	EVO700	EVO900
PNC	206249	206180
Width	700 mm	900 mm
Appliance typology	all	all

Kicking strips final effect



- Front and side kicking strips are aesthetical and hygienic elements, but they do not support the appliance's weight (that is the feet's task)
- Front kicking strips can be mounted on the back side if needed

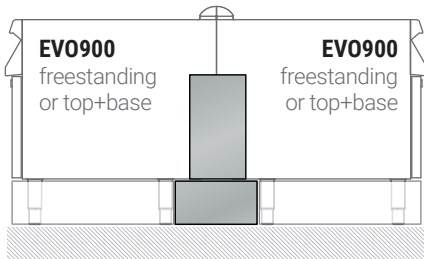
COVER PANELS FOR SERVICE DUCT



KIT OF PANELS FOR SERVICE DUCT

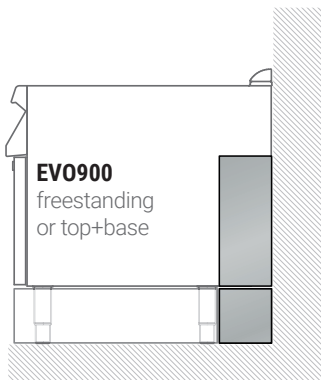
RANGE	EVO700
PNC	206248
Note	kit of panels for service duct for installation top on base
Size	300x40x160 mm

- Freestanding versions of EVO700 are without service duct
- Service duct cover panels are not needed in case aesthetical cover panels (code 216000) are ordered



KIT OF PANELS FOR SERVICE DUCT

RANGE	EVO900
PNC	206202
Note	kit of panels for service duct for back to back installation
Size	900x20x150 mm

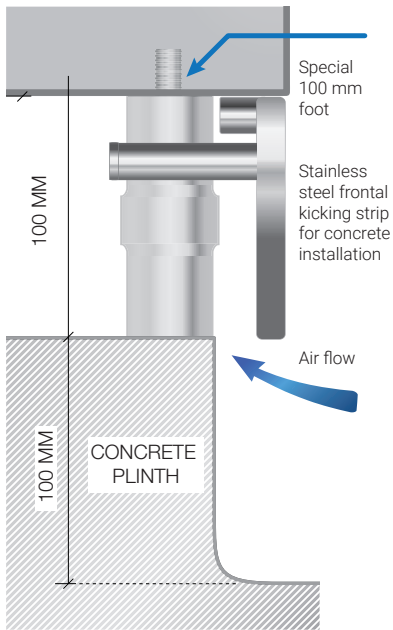


KIT OF PANELS FOR SERVICE DUCT

RANGE	EVO900
PNC	206181
Note	kit of panels for service duct for installation top on base or for freestanding units
Size	300x40x160 mm

- Service duct cover panels are not needed in case aesthetical cover panels (code 216134) are ordered

INSTALLATION ON 100 MM CONCRETE PLINTH



SPECIAL FEET FOR CONCRETE INSTALLATION

RANGE	EVO700 and EVO900
PNC	206210
Appliance typology	Except for: EVO700 programmable pasta cooker and EVO700 and EVO900 programmable fryers

- 1 kit per appliance
- The concrete plinth must be 100 mm high in order to have the worktop at 900 mm height: special feet for concrete installation are not adjustable in height
- Concrete installation is not possible for ref-freezer base

FRONTAL KICKING STRIPS

RANGE	EVO700 and EVO900					
PNC	206146	206147	206148	206150	206151	206152
Width	200 mm	400 mm	800 mm	1000 mm	1200 mm	1600 mm



SIDE KICKING STRIPS

RANGE	EVO700	EVO900
PNC	206265	206157

SUPPORT FOR BRIDGE INSTALLATION

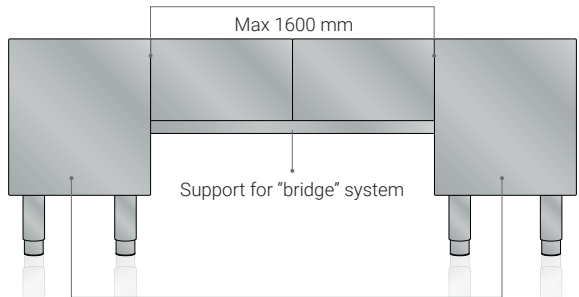
206137



SUPPORTS FOR BRIDGE INSTALLATION

RANGE	EVO700 and EVO900					
PNC	206154	206137	206138	206139	206140	206141
Width	400 mm	800 mm	1000 mm	1200 mm	1400 mm	1600 mm

- Only for top appliances

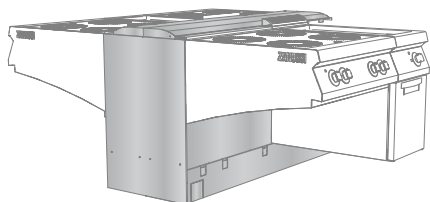


400/800 mm freestanding or "top on base" appliances (it is recommended to use flanged feet for 400 mm appliances)

- **Note:** Bridge installation is not possible onto a braising pan

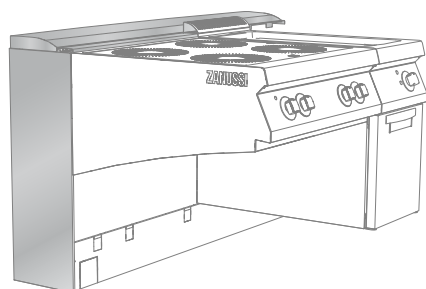
INSTALLATION ACCESSORIES

CANTILEVER SUPPORT



CENTRAL SUPPORTS WITH SERVICE DUCT

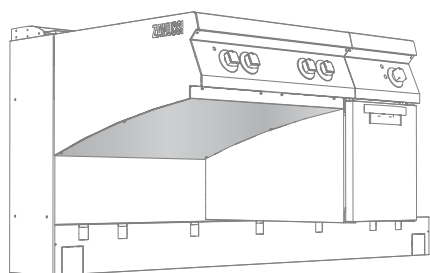
RANGE		EVO700 and EVO900			
PNC	206216	206217	206218	206219	206220
Size	2000 mm	2400 mm	2800 mm	3200 mm	3600 mm



WALL TYPE SUPPORTS WITH SERVICE DUCT

RANGE		EVO700 and EVO900			
PNC	206211	206212	206213	206214	206215
Size	2000 mm	2400 mm	2800 mm	3200 mm	3600 mm

- Special frame for installation
- Includes support frame, cover panels of central column, lower frontal cover panels of the support frame, top cover panel



UNDERCOVER PANELS

RANGE		EVO700			
PNC	206323	206324	206325	206329	
Size	200 mm	400 mm	800 mm	1200 mm	

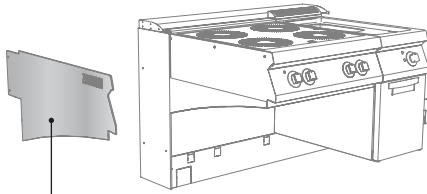
RANGE		EVO900			
PNC	206330	206331	206332	206336	
Size	200 mm	400 mm	800 mm	1200 mm	

Note: Ask your local Zanussi Sales representative for the Cantilever Configurator

INSTALLATION ACCESSORIES

CANTILEVER SUPPORT BARS

AND COVER PANELS

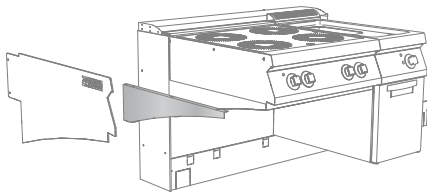


Cover panel.

No need to order lower covering elements in this case
(codes 206258, 206295)

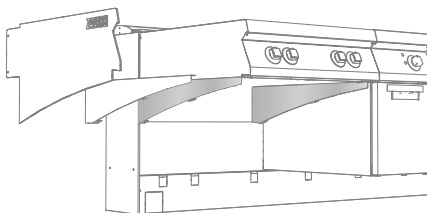
2 AESTHETIC SIDE COVER PANELS

RANGE	EVO700	EVO900
PNC	206327	206341



2 LOWER COVERING ELEMENTS

RANGE	EVO700	EVO900
PNC	206258	206295



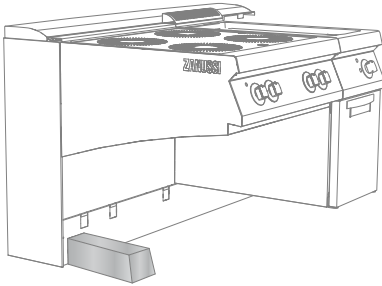
2 SUPPORT BARS FOR TOP UNITS

RANGE	EVO700	EVO900
PNC	206315	206322

Note: Ask your local Zanussi Sales representative for the Cantilever Configurator

INSTALLATION ACCESSORIES

CANTILEVER SUPPORT BARS AND COVER PANELS



FLOOR FIXING FOOT

RANGE	EVO700 and EVO900
PNC	206226
Dimension WxDxH	105 x 485 x 100 mm

KIT FOR BRAISING PAN INSTALLATION

RANGE	EVO900
PNC	206364

Note: Ask your local Zanussi Sales representative for the Cantilever Configurator

INSTALLATION ACCESSORIES

WHEELS AND FLANGED FEET

206135



WHEELS

RANGE	EVO700 and EVO900	
PNC	206135	206432
Appliance	4 wheels (2 with brakes)	6 wheels (3 with brakes)



SUPPORTS FOR HYGIENIC INSTALLATION ON FEET OR WHEELS - CROSS-WISE

RANGE	EVO700 and EVO900					
PNC	206366	206431	206367	206368	206369	206370
Appliance typology	all*	all*	all*	all*	all*	all*
Width	400 mm	600 mm	800 mm	1200 mm	1600 mm	2000 mm

- *Except EVO700 6 burner range with large oven and EVO900 23 l fryers and pasta cookers (see length-wise supports below)
- Not for top appliances

SUPPORTS FOR HYGIENIC INSTALLATION ON FEET OR WHEELS - LENGHT-WISE

RANGE	EVO700		EVO900	
PNC	206371	206444	206430	206372
Quantity	2	3	3	2
Appliance	6 burner range with large oven	ref. bases	ref. bases	23 l fryers and pasta cookers

206136



FLANGED FEET

RANGE	EVO700 and EVO900	
PNC	206136	
Quantity	2	

Note: braising pans can not be installed on wheels

INSTALLATION ACCESSORIES

WATER COLUMNS

206379



FLOW METER

RANGE	EVO700	EVO900
PNC	206379	206380

- Top equipped with water column and liter counter

206289



WATER COLUMN WITH SWIVEL ARM

RANGE	EVO700 and EVO900
PNC	206289

- Cannot be installed on: Fryers, Chip scuttles, Bases (neutral, freezer, refrigerated)

206291

206290



WATER COLUMN EXTENSION

RANGE	EVO700	EVO900
PNC	206291	206290

- Not needed when the water column inlet can be reached directly with the flexible water hose from the water net
- Both codes contain two extensions of different length
- Mandatory for EVO900 installations

INSTALLATION ACCESSORIES

WATER COLUMNS



206231



EXTERNAL SUPPORT FOR WATER COLUMN

RANGE	EVO700 and EVO900
PNC	206231

- To install the water column on the side or rear of the appliance

ZANUSSI PROFESSIONAL
Viale Treviso, 15 Vallenoncello, 33170 (PN) Italy
www.zanussiprofessional.com



The company reserves the right to change technical specifications without prior warning. The photographs are not contractually binding